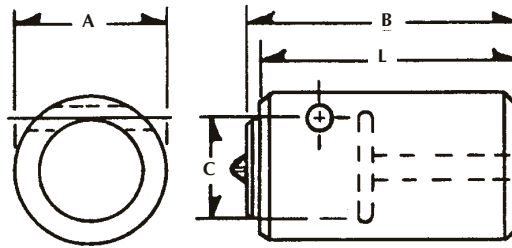


PHILLIPS TYPE PUNCH ADAPTORS

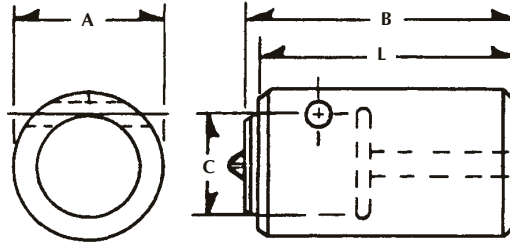


HEADER	CODE NO.	A	L	B	C
1/8 National	PA-12	7/8	1-7/16	1-17/32	.438
1/8 National	PA-12-1	7/8	1-7/16	1-17/32	.563
1/8 H S National	PA-12-3	7/8	1-19/32	1-11/16	.438
1/8 H S National	PA-12-4	7/8	1-19/32	1-11/16	.563
1/8 Headmaster	PA-12-5	3/4	1-17/32	1-5/8	.438
1/8 Headmaster	PA-12-6	3/4	1-17/32	1-5/8	.563
1/8 Headmaster	PA-12-9	7/8	1-17/32	1-5/8	.438
1/8 Headmaster	PA-12-10	7/8	1-17/32	1-5/8	.563
1/8 Hartford	PA-12-3	7/8	1-19/32	1-11/16	.438
1/8 Hartford	PA-12-4	7/8	1-19/32	1-11/16	.563
1/8 Hartford	PA-12-7	7/8	1-29/32	2	.438
1/8 Hartford	PA-12-8	7/8	1-29/32	2	.563
0 & 1 Toggle	PA-12-7	7/8	1-29/32	2	.438
0 Toggle	PA-12-8	7/8	1-29/32	2	.563
0 Toggle	PA-18-7	7/8	1-21/32	1-3/4	.438
0 Toggle	PA-18-8	7/8	1-21/32	1-3/4	.563
3/16 National	PA-18	7/8	1-13/16	1-29/32	.438
3/16 National	PA-18-1	7/8	1-13/16	1-29/32	.563
1 Toggle	PA-18-2	1	1-21/32	1-3/4	.438
1 Toggle	PA-18-3	1	1-21/32	1-3/4	.563
1 Toggle	PA-18-14	1	1-21/32	1-3/4	.751
3/16 H S National	PA-18-11	1	1-25/32	1-7/8	.438
3/16 H S National	PA-18-12	1	1-25/32	1-7/8	.563
3/16 Headmaster	PA-12-7	7/8	1-29/32	2	.438
3/16 HiPro	PA-12-8	7/8	1-29/32	2	.563
3/16 HiPro	PA-18-2	1	1-21/32	1-3/4	.438
3/16 HiPro	PA-18-3	1	1-21/32	1-3/4	.563
3/16 HiPro	PA-18-14	1	1-21/32	1-3/4	.751
H15 Nakashimada	PA-18-2	1	1-21/32	1-3/4	.438
H15 Nakashimada	PA-18-3	1	1-21/32	1-3/4	.563
3/16 Hartford	PA-18-2	1	1-21/32	1-3/4	.438
3/16 Hartford	PA-18-3	1	1-21/32	1-3/4	.563
3/16 Hartford	PA-18-14	1	1-21/32	1-3/4	.751
3/16 Hartford	PA-25-25	1-1/2	2-13/32	2-1/2	.438
3/16 Hartford	PA-25-3	1-1/2	2-13/32	2-1/2	.563
3/16 Hartford	PA-25-4	1-1/2	2-13/32	2-1/2	.8755
3/16 Hartford	PA-25-5	1-1/2	2-13/32	2-1/2	1.0005
SP 01 Sacma	PA-12-7	7/8	1-29/32	2	.438
SP 01 Sacma	PA-12-8	7/8	1-29/32	2	.563

WARNING

Any heading punch may break or shatter under improper use. Government regulations require use of safety glasses and other appropriate safety equipment at all times in the vicinity of use.

PHILLIPS TYPE PUNCH ADAPTORS



HEADER	CODE NO.	A	L	B	C
3/16 Waterbury	PA-18-4	1-3/16	2-1/32	2-1/8	.438
3/16 Waterbury	PA-18-5	1-3/16	2-1/32	2-1/8	.563
2 Toggle	PA-25-15	1-1/4	2-17/32	2-5/8	.438
2 Toggle	PA-25-6	1-1/4	2-13/32	2-1/2	.563
2 Toggle	PA-25-7	1-1/4	2-13/32	2-1/2	.8755
2 Toggle	PA-25-8	1-5/16	2-9/32	2-3/8	.563
2 Toggle	PA-25-9	1-5/16	2-9/32	2-3/8	.8755
H20 Nakashimada	PA-25-15	1-1/4	2-17/32	2-5/8	.438
H20 Nakashimada	PA-25-6	1-1/4	2-13/32	2-1/2	.563
H20 Nakashimada	PA-25-7	1-1/4	2-13/32	2-1/2	.8755
H20 Nakashimada	PA-25-8	1-5/16	2-9/32	2-3/8	.563
H20 Nakashimada	PA-25-9	1-5/16	2-9/32	2-3/8	.438
SP 11 Sacma	PA-25-1	1-1/4	1-15/32	2-1/32	.563
SP 11 Sacma	PA-25-2	1-1/4	1-15/16	2-1/32	.8755
SP 11 Sacma	PA-25-15	1-1/4	2-17/16	2-5/8	.438
SP 11 Sacma	PA-25-6	1-1/4	2-13/32	2-1/2	.563
SP 11 Sacma	PA-25-7	1-1/4	2-13/32	2-1/2	.8755
1/4 National	PA-25-25	1-1/2	2-13/32	2-1/2	.438
1/4 National	PA-25	1-1/4	1-15/16	2-1/32	.438
1/4 National	PA-25-3	1-1/2	2-13/32	2-1/2	.563
1/4 National	PA-25-4	1-1/2	2-13/32	2-1/2	.8755
1/4 National	PA-25-5	1-1/2	2-13/32	2-1/2	1.0005
5/16 HiPro	PA-31-20	1-5/8	2-21/32	2-3/4	.438
5/16 HiPro	PA-31-11	1-5/8	1-29/32	2	.563
5/16 HiPro	PA-31-12	1-5/8	1-29/32	2	.8755
5/16 HiPro	PA-31-13	1-5/8	1-29/32	2	1.0005
5/16 HiPro	PA-31-14	1-5/8	1-29/32	2	1.2505
5/16 HiPro	PA-31-15	1-5/8	2-21/32	2-3/4	.563
SP 21 Sacma	PA-31-16	1-5/8	2-21/32	2-3/4	.8755
SP 21 Sacma	PA-31-17	1-5/8	2-21/32	2-3/4	1.0005
SP 21 Sacma	PA-31-18	1-5/8	2-21/32	2-3/4	1.2505
5/16 Hartford	PA-31-24	1-5/8	2-15/32	2-9/16	.563
5/16 Hartford	PA-31-21	1-5/8	2-15/32	2-9/16	.8755
5/16 Hartford	PA-31-23	1-5/8	2-15/32	2-9/16	1.0005
5/16 Waterbury	PA-31-4	1-13/16	2-21/32	2-3/4	.563
5/16 Waterbury	PA-31-5	1-13/16	2-21/32	2-3/4	.8755
5/16 Waterbury	PA-31-19	1-13/16	2-21/32	2-3/4	1.0005
5/16 Waterbury	PA-31-6	1-13/16	2-21/32	2-3/4	1.2505
5/16 National	PA-31	1-5/8	2-25/32	2-7/8	.563
5/16 National	PA-31-1	1-5/8	2-25/32	2-7/8	.8755
5/16 National	PA-31-2	1-5/8	2-25/32	2-7/8	1.0005
5/16 National	PA-31-3	1-5/8	2-25/32	2-7/8	1.2505

•PUNCH ADAPTORS CAN BE MADE ON SPECIAL ORDER FOR ANY SIZES NOT LISTED.

WARNING

Any heading punch may break or shatter under improper use. Government regulations require use of safety glasses and other appropriate safety equipment at all times in the vicinity of use.