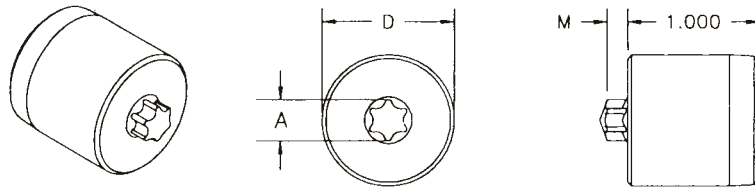


**FLAT TORX® PUNCHES**

**ONE PIECE FLAT TORX® PUNCHES TXP-21.1**



Also available with Hexlobe® Recess.

**T10**

| PIN NUMBER | M<br>+0.003 | A<br>REF | D<br>REF |
|------------|-------------|----------|----------|
| 10-TXI-150 | 0.055       | 0.1110   | 0.5625   |
| 10-TXI-151 | 0.047       |          |          |
| 10-TXI-152 | 0.065       |          |          |
| 10-TXI-153 | 0.040       |          |          |
| 10-TXI-154 | 0.053       |          |          |
| 10-TXI-155 | 0.037       |          |          |
| 10-TXI-156 | 0.030       |          |          |

**T15**

| PIN NUMBER | M<br>+0.003 | A<br>REF | D<br>REF |
|------------|-------------|----------|----------|
| 15-TXI-150 | 0.065       | 0.1320   | 0.5625   |
| 15-TXI-151 | 0.050       |          |          |
| 15-TXI-152 | 0.075       |          |          |
| 15-TXI-153 | 0.040       |          |          |
| 15-TXI-154 | 0.047       |          |          |
| 15-TXI-155 | 0.037       |          |          |
| 15-TXI-156 | 0.063       |          |          |

**T20**

| PIN NUMBER | M<br>+0.003 | A<br>REF | D<br>REF |
|------------|-------------|----------|----------|
| 20-TXI-150 | 0.094       | 0.1550   | 0.5625   |
| 20-TXI-152 | 0.085       |          |          |
| 20-TXI-153 | 0.062       |          |          |
| 20-TXI-154 | 0.052       |          |          |
| 20-TXI-155 | 0.065       |          |          |
| 20-TXI-156 | 0.042       |          |          |

**T25**

| PIN NUMBER | M<br>+0.003 | A<br>REF | D<br>REF |
|------------|-------------|----------|----------|
| 25-TXI-150 | 0.120       | 0.1785   | 0.8750   |
| 25-TXI-151 | 0.070       |          |          |
| 25-TXI-152 | 0.095       |          |          |
| 25-TXI-153 | 0.062       |          |          |
| 25-TXI-154 | 0.088       |          |          |

**T27**

| PIN NUMBER | M<br>+0.003 | A<br>REF | D<br>REF |
|------------|-------------|----------|----------|
| 27-TXI-150 | 0.125       | 0.2005   | 0.8750   |
| 27-TXI-151 | 0.077       |          |          |
| 27-TXI-152 | 0.110       |          |          |
| 27-TXI-153 | 0.090       |          |          |
| 27-TXI-154 | 0.080       |          |          |

**T30**

| PIN NUMBER | M<br>+0.003 | A<br>REF | D<br>REF |
|------------|-------------|----------|----------|
| 30-TXI-150 | 0.130       | 0.2215   | 0.8750   |
| 30-TXI-151 | 0.098       |          |          |
| 30-TXI-152 | 0.110       |          |          |
| 30-TXI-153 | 0.075       |          |          |
| 30-TXI-154 | 0.062       |          |          |
| 30-TXI-155 | 0.048       |          |          |
| 30-TXI-156 | 0.092       |          |          |
| 30-TXI-157 | 0.072       |          |          |

**T40**

| PIN NUMBER | M<br>+0.003 | A<br>REF | D<br>REF |
|------------|-------------|----------|----------|
| 40-TXI-150 | 0.140       | 0.2670   | 0.8750   |
| 40-TXI-151 | 0.115       |          |          |
| 40-TXI-152 | 0.130       |          |          |
| 40-TXI-153 | 0.125       |          |          |
| 40-TXI-154 | 0.108       |          |          |
| 40-TXI-155 | 0.090       |          |          |
| 40-TXI-156 | 0.077       |          |          |
| 40-TXI-157 | 0.112       |          |          |

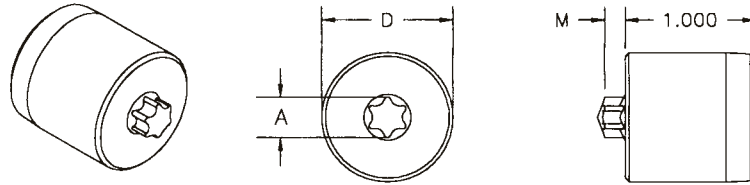
**T45**

| PIN NUMBER | M<br>+0.003 | A<br>REF | D<br>REF |
|------------|-------------|----------|----------|
| 45-TXI-150 | 0.160       | 0.3130   | 1.0000   |
| 45-TXI-151 | 0.120       |          |          |
| 45-TXI-152 | 0.145       |          |          |
| 45-TXI-153 | 0.115       |          |          |
| 45-TXI-154 | 0.097       |          |          |
| 45-TXI-155 | 0.087       |          |          |
| 45-TXI-156 | 0.142       |          |          |

TORX® is a registered trademark of Camcar/Textron  
Hexlobe® is a registered trademark of Wrentham Tool Products

**FLAT TORX® PUNCHES**

**ONE PIECE FLAT TORX® PUNCHES TXP-15, 15.1**



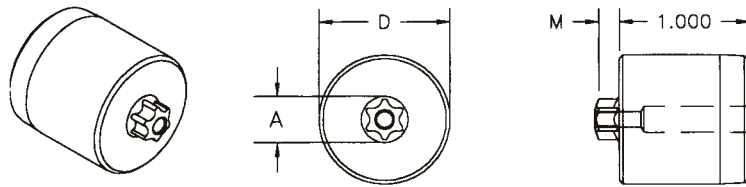
**Also available with Hexlobe® Recess.**

| DRIVE SIZE | PIN NUMBER | M<br>+0.003 | A<br>REF | D      |
|------------|------------|-------------|----------|--------|
| T1         | 1-TXI-275  | 0.014       | 0.0354   | 0.4375 |
| T2         | 2-TXI-275  | 0.016       | 0.0398   | 0.4375 |
| T3         | 3-TXI-275  | 0.018       | 0.0478   | 0.4375 |
| T4         | 4-TXI-275  | 0.022       | 0.0541   | 0.4375 |
| T5         | 5-TXI-009  | 0.014       | 0.0590   | 0.4375 |
| T5         | 5-TXI-017  | 0.022       |          |        |
| T5         | 5-TXI-025  | 0.028       |          |        |
| T6         | 6-TXI-015  | 0.019       | 0.0700   | 0.4375 |
| T6         | 6-TXI-022  | 0.027       |          |        |
| T6         | 6-TXI-030  | 0.030       |          |        |
| T6         | 6-TXI-035  | 0.038       | 0.0825   | 0.4375 |
| T7         | 7-TXI-015  | 0.022       |          |        |
| T7         | 7-TXI-020  | 0.027       |          |        |
| T7         | 7-TXI-025  | 0.030       |          |        |
| T7         | 7-TXI-027  | 0.032       |          |        |
| T7         | 7-TXI-030  | 0.035       |          |        |
| T7         | 7-TXI-035  | 0.040       |          |        |
| T8         | 8-TXI-018  | 0.025       | 0.0952   | 0.5625 |
| T8         | 8-TXI-020  | 0.027       |          |        |
| T8         | 8-TXI-025  | 0.030       |          |        |
| T8         | 8-TXI-028  | 0.035       |          |        |
| T8         | 8-TXI-030  | 0.032       |          |        |
| T8         | 8-TXI-033  | 0.038       |          |        |
| T8         | 8-TXI-040  | 0.040       |          |        |
| T8         | 8-TXI-043  | 0.048       |          |        |
| T9         | 9-TXI-029  | 0.034       | 0.1025   | 0.5625 |
| T9         | 9-TXI-032  | 0.037       |          |        |
| T9         | 9-TXI-035  | 0.043       |          |        |
| T9         | 9-TXI-047  | 0.052       |          |        |

TORX® is a registered trademark of Camcar/Textron  
Hexlobe® is a registered trademark of Wrentham Tool Products

**FLAT TORX® PUNCHES**

**TAMPER RESISTANT FLAT TORX® PUNCHES TXP-19.1**

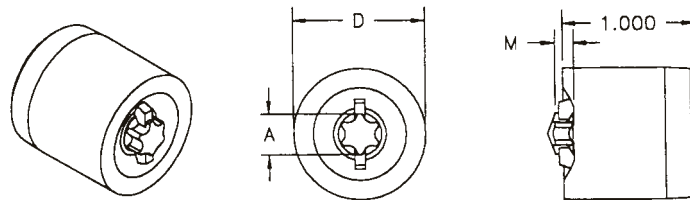


**Also available with Hexlobe® Recess.**

| DRIVE SIZE | PIN NUMBER   | M<br>+0.003   | A<br>REF | D      |
|------------|--------------|---------------|----------|--------|
| T8         | 8-TXI-30-HX  | 0.032 / 0.035 | 0.0942   | 0.4375 |
| T9         | 9-TXI-250-HX | 0.035 / 0.040 | 0.1015   | 0.5625 |

TORX® is a registered trademark of Camcar/Textron  
Hexlobe® is a registered trademark of Wrentham Tool Products

**COMBINATION TORX® STRUCK SLOT  
PAN HEAD PUNCHES TXP-33.4**



**Also available with Hexlobe® Recess.**

| DRIVE SIZE | PIN NUMBER | M<br>+0.004 | A<br>REF | D      |
|------------|------------|-------------|----------|--------|
| T7         | 7-TXI-175  | 0.031       | 0.0815   | 0.4375 |
| T8         | 8-TXI-175  | 0.041       | 0.0942   |        |
| T8         | 8-TXI-176  | 0.041       | 0.0942   |        |
| T9         | 9-TXI-175  | 0.040       | 0.1015   | 0.5625 |
| T10        | 10-TXI-175 | 0.051       | 0.1110   |        |
| T10        | 10-TXI-176 | 0.051       | 0.1110   |        |
| T15        | 15-TXI-175 | 0.051       | 0.1320   | 0.8750 |
| T20        | 20-TXI-175 | 0.060       | 0.1550   |        |
| T25        | 25-TXI-175 | 0.075       | 0.1785   |        |
| T27        | 27-TXI-175 | 0.075       | 0.2005   | 1.0000 |
| T30        | 30-TXI-175 | 0.090       | 0.2215   |        |
| T40        | 40-TXI-175 | 0.110       | 0.2665   |        |
| T45        | 45-TXI-175 | 0.140       | 0.3125   |        |

TORX® is a registered trademark of Camcar/Textron  
Hexlobe® is a registered trademark of Wrentham Tool Products

**METRIC TORX® PUNCHES**

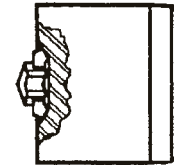
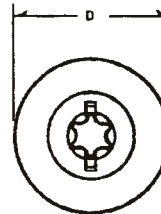
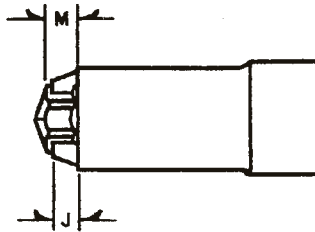
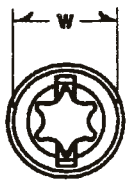
Hexlobe® Style is also available.

**STRUCK SLOT TORX®  
PIN TMP-49A**

| DRIVE SIZE | PUNCH CODE | M REF. | J    |
|------------|------------|--------|------|
| T7         | 7TXI-170   | .030   | .027 |
| T8         | 8TXI-170   | .040   | .030 |
| T9         | 9TXI-170   | .040   | .035 |
| T10        | 10TXI-170  | .045   | .040 |
| T15        | 15TXI-170  | .050   | .045 |
| T20        | 20TXI-170  | .060   | .050 |
| T25        | 25TXI-170  | .070   | .065 |
| T27        | 27TXI-170  | .080   | .065 |
| T30        | 30TXI-170  | .095   | .070 |
| T40        | 40TXI-170  | .110   | .095 |
| T45        | 45TXI-170  | .140   | .120 |
| T50        | 50TXI-170  | .154   | .135 |
| T55        | 55TXI-170  | .175   | .150 |

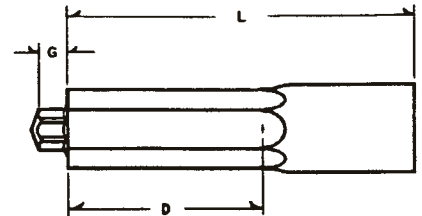
**STRUCK SLOT TORX®  
PUNCHES TMP-51.1**

| DRIVE SIZE | PUNCH CODE | DIA.  |
|------------|------------|-------|
| T6         | 6TMI-175   | .4375 |
| T7         | 7TMI-175   | .4375 |
| T8         | 8TMI-175   | .4375 |
| T9         | 9TMI-175   | .4375 |
| T10        | 10TMI-175  | .5625 |
| T15        | 15TMI-175  | .5625 |
| T20        | 20TMI-175  | .5625 |
| T25        | 25TMI-175  | .875  |
| T27        | 27TMI-175  | .875  |
| T30        | 30TMI-175  | .875  |
| T40        | 40TMI-175  | .875  |
| T45        | 45TMI-175  | 1.250 |
| T50        | 50TMI-175  | 1.250 |
| T55        | 55TMI-175  | 1.250 |



**TORX® HEX WASHER HEAD  
PUNCH PINS TMP-56**

| DRIVE SIZE | PUNCH CODE | DIA.  | G REF. | H    | L     | W    |
|------------|------------|-------|--------|------|-------|------|
| T10        | 10TMI-200  | .687  | .045   | .142 | 1.227 | .307 |
| T15        | 15TMI-200  | .687  | .050   | .187 | 1.227 | .307 |
| T20        | 20TMI-200  | .687  | .065   | .207 | 1.227 | .307 |
| T25        | 25TMI-200  | .687  | .070   | .263 | 1.227 | .371 |
| T27        | 27TMI-200  | .687  | .080   | .302 | 1.227 | .371 |
| T30        | 30TMI-200  | 1.250 | .095   | .381 | 1.602 | .494 |
| T40        | 40TMI-200  | 1.250 | .115   | .497 | 1.559 | .619 |
| T45        | 45TMI-200  | 1.250 | .140   | .575 | 1.559 | .619 |



TORX® is a registered trademark of Camcar/Textron  
Hexlobe® is a registered trademark of Wrentham Tool Products